



SOLAR
LANDSCAPE LED LIGHT
PATENTED PRODUCT



CASE
ELS-30 In SA

Aluminum Alloy



Housing color option :  White  Silver  Black



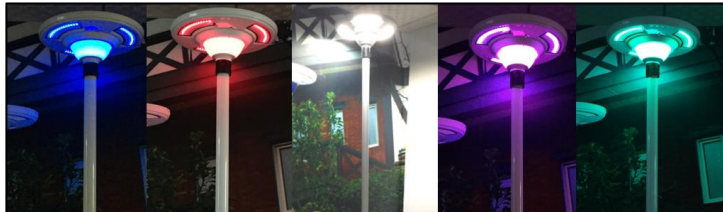
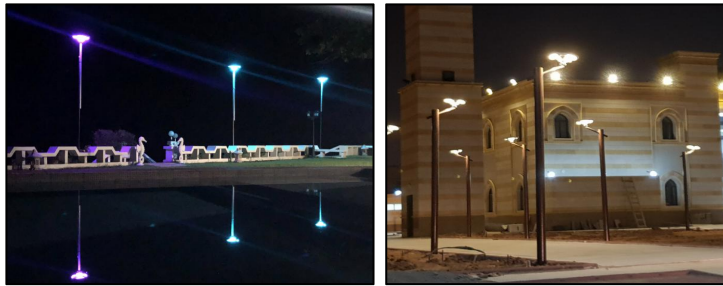
Technical Specifications	
Epistar LED	15W 110-120LM/W > 50000H
LED Module	3
Battery Type	3.7V 44AH, Li-ion, > 1000 cycle times
Solar Panel	20W Monocrystalline silicon Laminated Plate, 19% (Taiwan Neo) > 25years
Charging method	Solar power/ DC Input : 5521 16.8V 2A
Solar charging time	6-8 hrs by bright sunshine
Lighting time	3-5 nights after full charged
Sensor	Light sensor
Lighting mode	5Hrs full bright +Dim 25% working until dawn
Material	Aluminum Alloy (Powder coated) + PC , Housing lifespan: > 25years
Product Size	530*290mm
IP level	65
Working Temperature	-25°C ~ 65°C
Warranty	3 years
Patent No.	201830404231.8 , 201830403788.X
Certificate	CE,ROHS ,FCC , ISO9001:2015
Pole diameter	≤60mm
Installation height	3-4M
Recommended distance of 2poles	9-12m
Package	Carton Size :58*58*28cm N.G/G.W (KG) 7/ 7.8KG 20FT: 270pcs , 40GP:560pcs , 40HQ:660pcs

Aluminum Alloy



Housing color option :  White  Silver  Black

16 color



Technical Specifications	
Epistar LED	20W 110-120LM/W > 50000H
LED Module	3+1
Battery Type	3.7V 72AH, Li-ion, > 1000 cycle times
Solar Panel	25W Monocrystalline silicon Laminated Plate, 19% (Taiwan Neo) > 25years
Charging method	Solar power/ DC Input : 5521 16.8V 2A
Solar charging time	6-8 hrs by bright sunshine
Lighting time	3-5 nights after full charged
Sensor	Light sensor
Lighting mode	5Hrs full bright +Dim 25% working until dawn
Material	Aluminum Alloy (Powder coated) + PC , Housing lifespan: > 25years
Product Size	530*290mm
IP level	65
Working Temperature	-25°C ~ 65°C
Warranty	3 years
Patent No.	201830404231.8 , 201830403788.X
Certificate	CE,ROHS ,FCC , ISO9001:2015
Pole diameter	≤60mm
Installation height	3-4M
Distance of 2poles	9-12m
Package	Carton Size :58*58*28cm N.G/G.W (KG) 7.5/ 8.5KG 20FT: 270pcs , 40GP:560pcs , 40HQ:660pcs

(UFO Solar Plaza Led Light -3 Models) **Model: KTSL6830K (20W Solar Insect killer Led Light)**



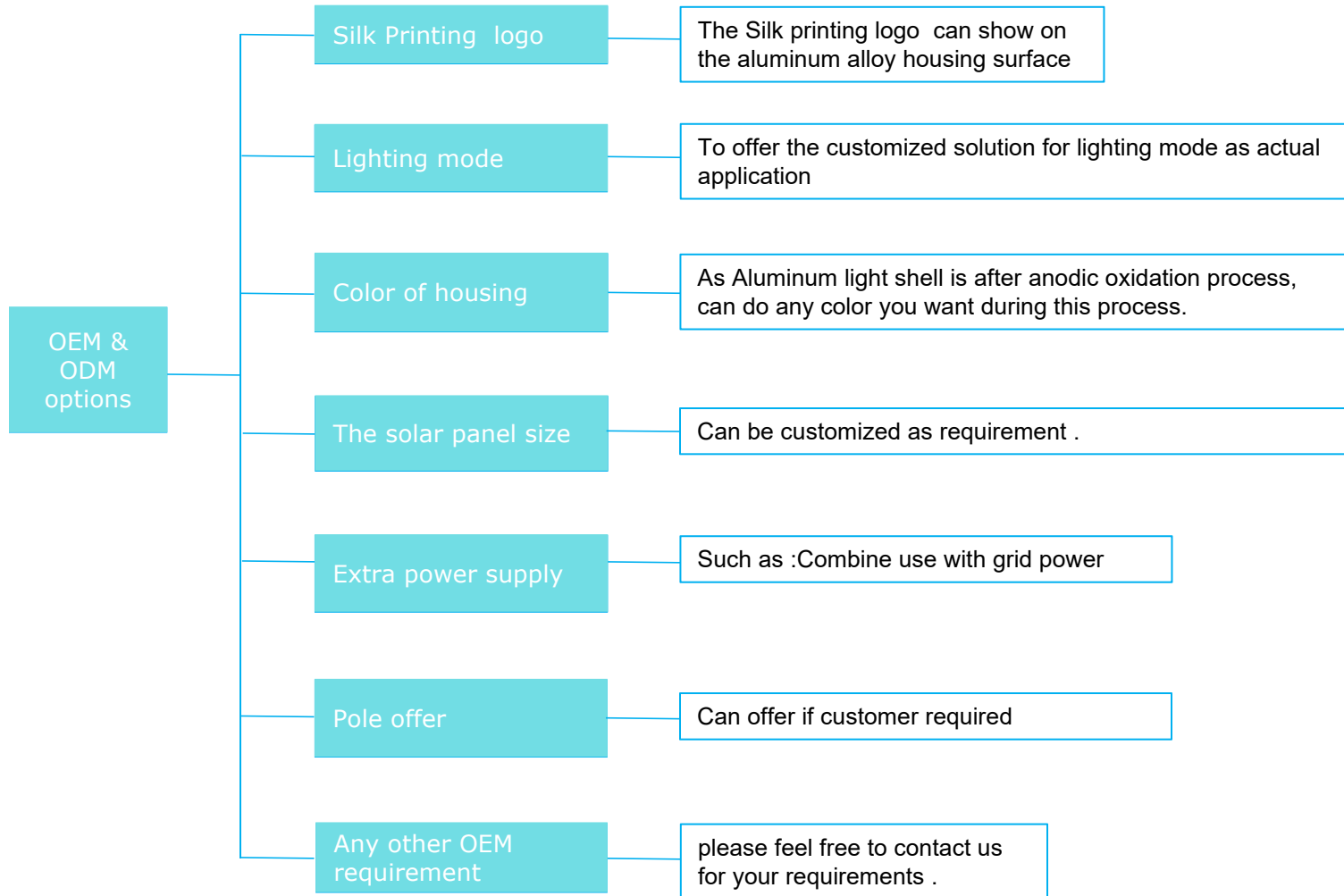
Housing color option :  White  Silver  Black



Technical Specifications	
Epistar LED	20W 110-120LM/W > 50000H
LED Module	3+1
Battery Type	3.7V 72AH, Li-ion, > 1000 cycle times
Solar Panel	25W Monocrystalline silicon Laminated Plate, 19% (Taiwan Neo) > 25years
Charging method	Solar power/ DC Input : 5521 16.8V 2A
Solar charging time	6-8 hrs by bright sunshine
Lighting time	3-5 nights after full charged
Sensor	Light sensor / Water sensor
Lighting mode	Lighting : 5Hrs full bright +Dim 25% working until dawn Killing Function : 5 hrs working , then auto off .
Material	Aluminum Alloy (Powder coated) + PC , Housing lifespan: > 25years
Product Size	530*290mm
IP level	65
Working Temperature	-25°C ~ 65°C
Warranty	3 years
Patent No.	201830404231.8 , 201830403788.X
Certificate	CE,ROHS ,FCC , ISO9001:2015
Pole diameter	≤60mm
Installation height	3-4M
Distance of 2poles	9-12m
Package	CTN1 : 58*58*16CM CTN2: 30*30*28CM 7/ 7.5KG 2/2.5KG 20FT: 350PCS 40FT: 725 PCS 60HQ: 850PCS

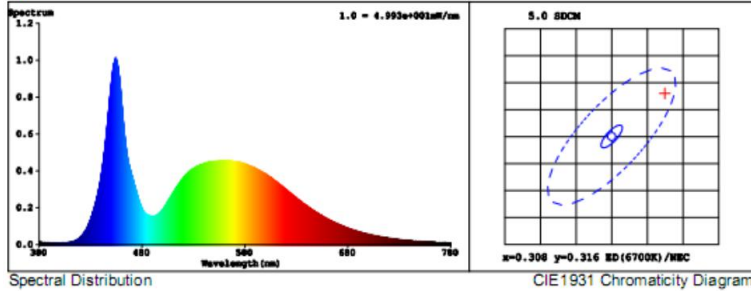
OEM & ODM Service

We provide customization service, for the series, below OEM or ODM options are available:



Spectrum

Spectrum

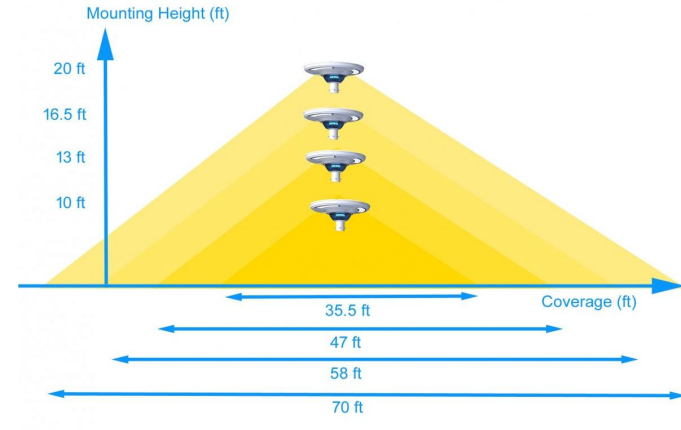


Colorimetric Parameters

Chromaticity Coordinate: $x = 0.3154$ $y = 0.3240$ / $u' = 0.2016$ $v' = 0.4660$ ($duv = -7.85e-04$)

CCT= 6390K Prcp WL: Ld=484.7nm Purity=6.8%

Peak WL: Lp=454nm FWHM: =21.6nm Ratio:R=13.4% G=81.6% B=5.0%



Certificates (CE,ROHS,FCC,ISO9001:2015)